

# Multi





Welcome to Built Prefab's Multi model.

The Multi is a scalable design based on a 1363 sf prefab modular home featuring two bedrooms and two bathrooms, and an office.

The Multi features an open and streamlined interior, with an efficient placement of Bedrooms to utilize every square foot. The home also features a full Office, full Master Bath with numerous large front facing windows for maximum natural lighting.

The original design concept for the Multi came from our desire to create a functional layout for a scalable system for building multiple units..

Due to its unique design the Multi, it has multiple different variations/combinations which we have created depending on what you are wanting to build! From a single unit, single family home, to a 3 Storey development, the Multi can do it all!

The Multi is perfect for uses like:

- a primary residence;
- a Duplex, Multi, Sixplex development;

Or, in a commercial setting such as:

- a retreat; or
- a summer or winter rental accommodation.

The - would be a beautiful addition to your property whether it be an urban or rural location.

## Floorplan and General Finishes

Floorplans	4
Multi One	4
Multi Two	7
Multi Two +	10
Multi Four	12
Multi Six	15
Interior Renderings	18
Floor Coverings	26
Windows and Doors	28
Lighting	29

## Kitchen

Kitchens and Appliances	31
Kitchen Finishes	37

## Bathroom

Bathroom Configurations	39
Bathroom Fixtures	40
Bathroom Finishes	42

## Misc

Bedroom Closet Options	43
Fireplace Options	44
Specifications	46
Notes	48
Contact	49

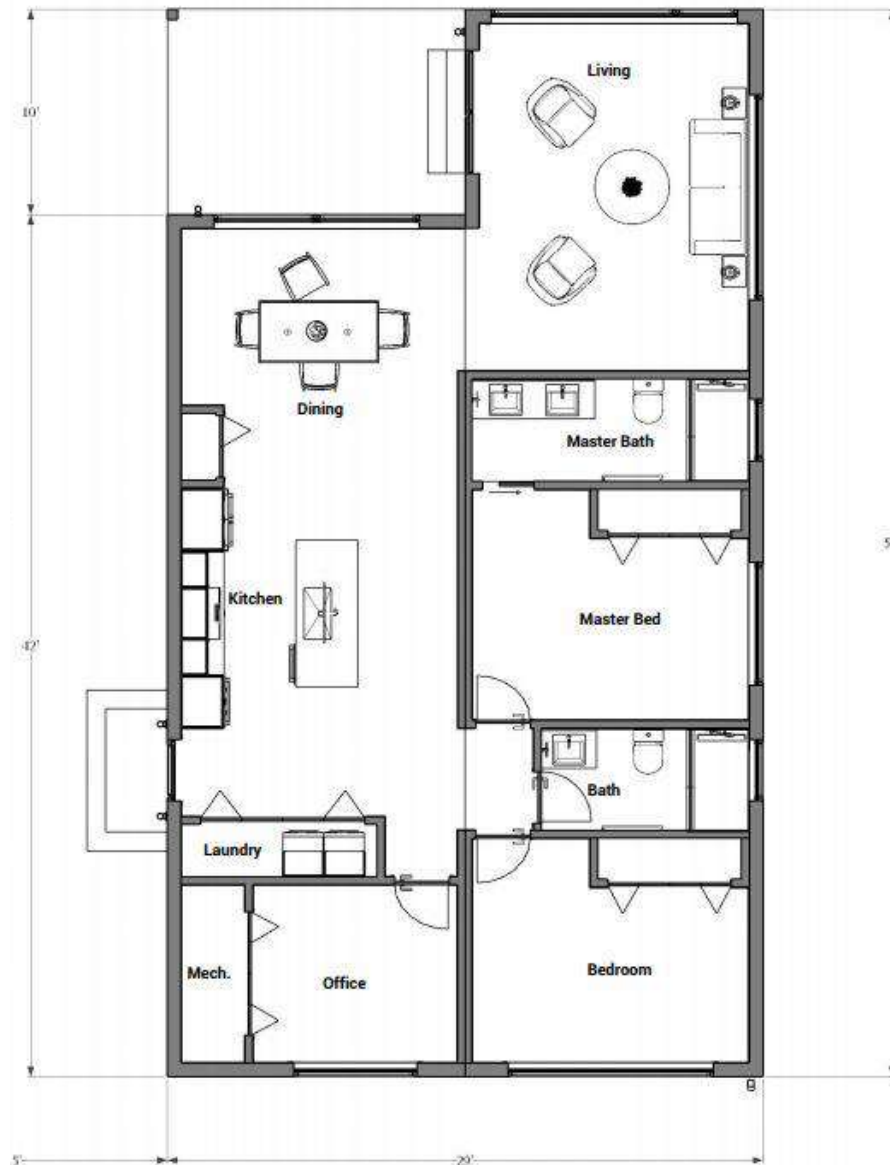


# Multi One





## 2 Bedroom | 2 Baths | 1363 sf x 1







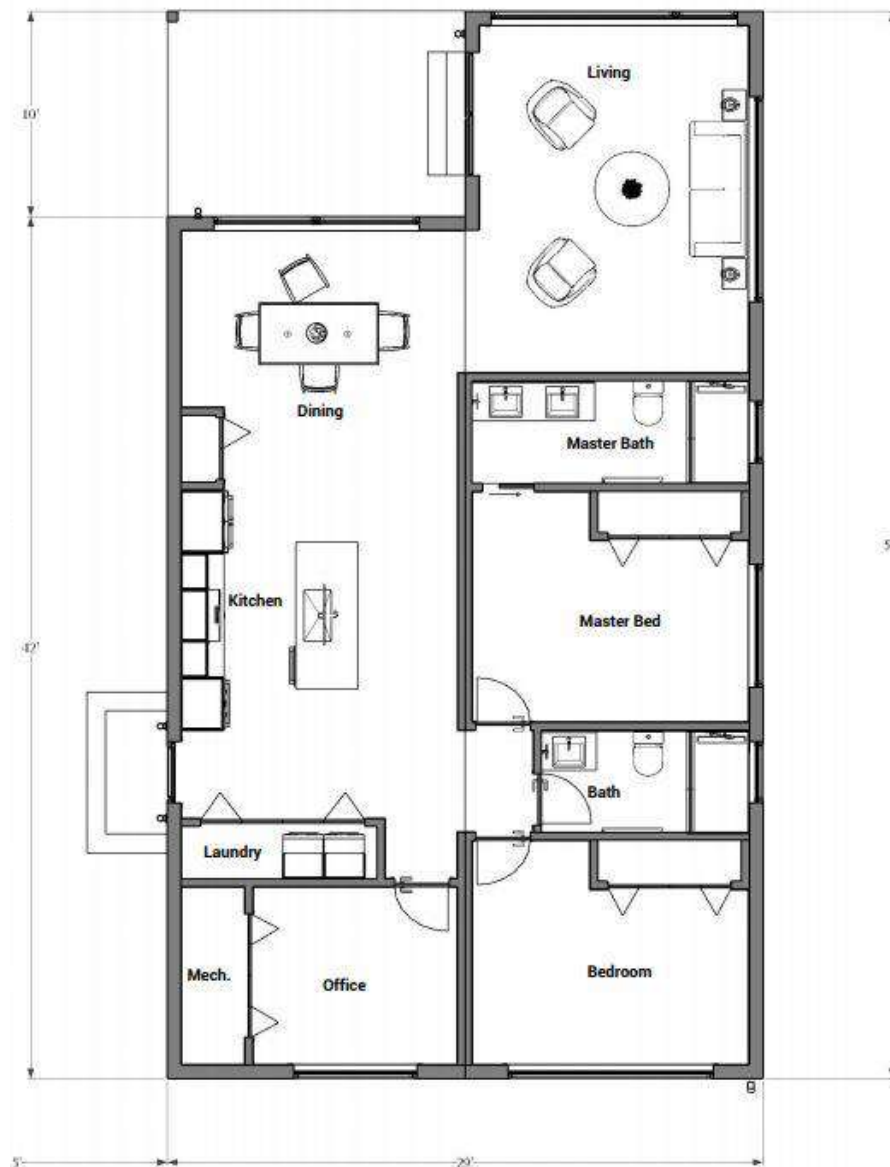
# Multi Two



**2 Units 2 Stories**



## 2 Bedroom | 2 Baths | 1363 sf x 2









# Multi Two +









# Multi Four





2 Bedroom | 2 Baths | 1363 sf x 4









# Multi Six





## 2 Bedroom | 2 Baths | 1363 sf x 6



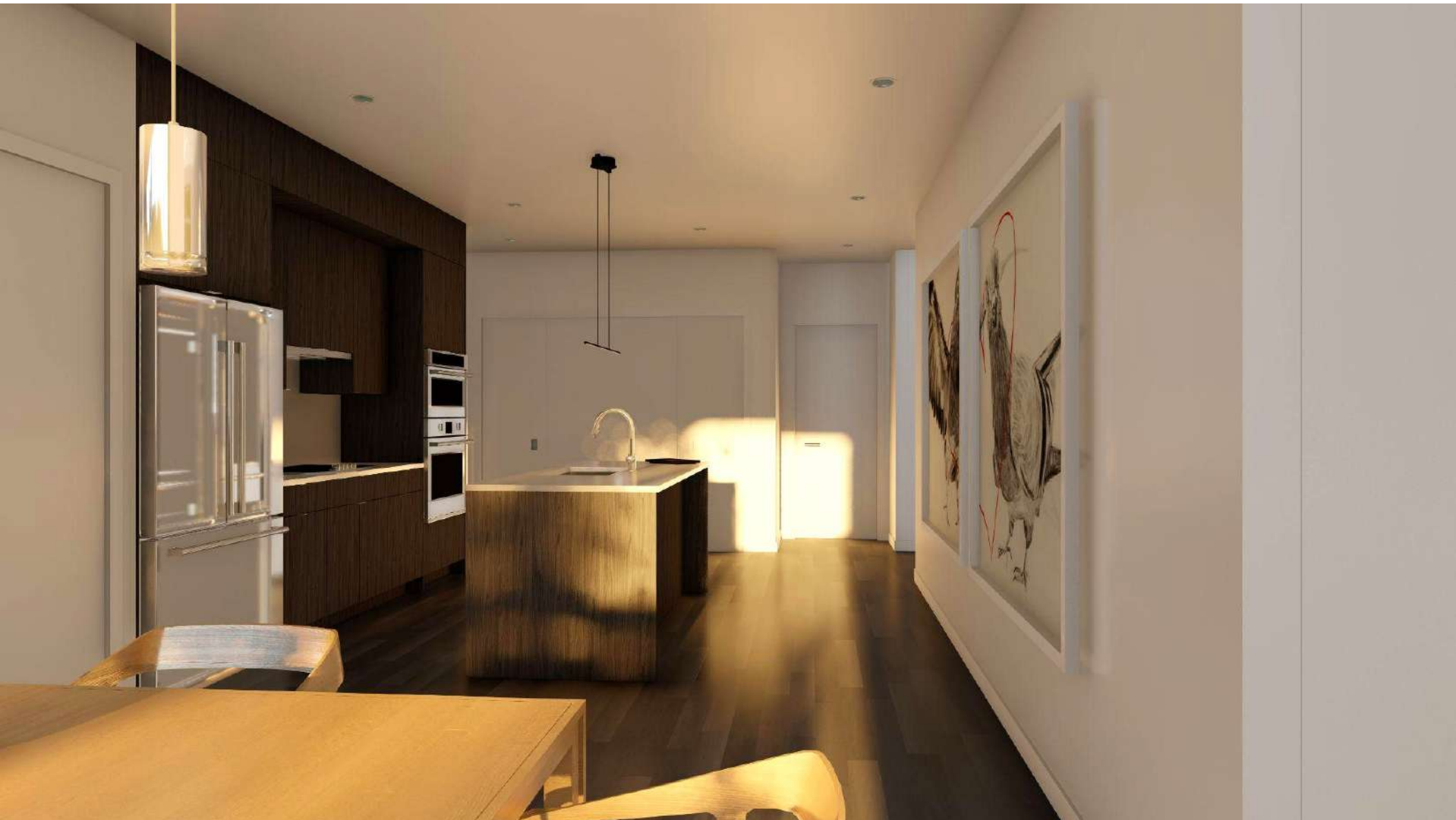






































# Luxury Vinyl Floor Options

Cascade Runway

Option 1



Florence Tan

Option 2



Tokyo Moonlight

Option 3



Paris Chocolate



# Hardwood Floor Options

Dansk Hardwood Monterey Collection

Option 1



Vanilla Bean

Option 2



Pebble Beach

Option 3

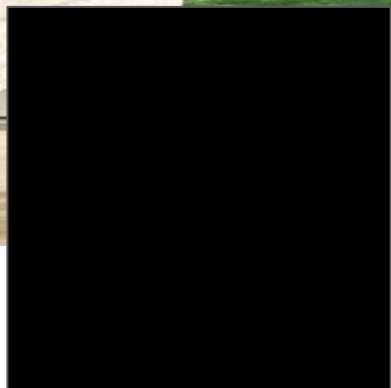


Evening Mist



# Windows and Doors

PVC-U Windows and Lift & Slide Doors Where Specified,  
Fibreglass or Aluminum Multipoint Entry Door, Colored Exterior,  
White Interior



**Black**  
(Standard)



**Dark Grey/Anthracite**  
(Upgrade)



**DALS Lighting - 6" 12 Watt 750  
lumen Round Indirect Recessed  
Dimmable Recessed Light  
(General Lighting)**



**Kuzco Nordic  
Outdoor Wall Light**



**DALS LED  
Under Cabinet Puck  
Lights**



**Kuzco Bedford LED Ceiling  
Mount  
(General Bath Lighting)**

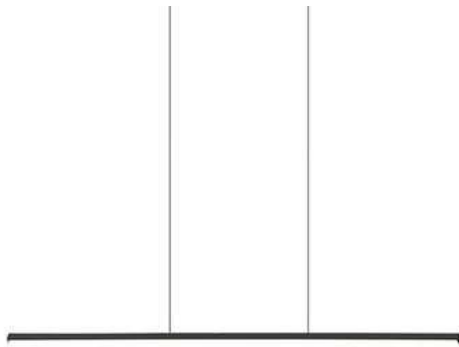


**Kuzco Vega Vanity Light**



**Modern Forms Axis  
Ceiling Fan  
(Nest Compatible)**





**Kuzco Chute Linear Pendant  
(Over Island)**



**Kuzco Archibald Flair  
Pendant  
(Kitchen Seating Option 1)**



**Kuzco Cameo Tube  
Pendant  
(Kitchen Seating Option 2)**

# Kitchen Option 1 - One Wall w/ Island and Range

One Wall Kitchen with 36" Fridge, Range and Microwave with Island and 32" Blanco Quatrus 15U Radius Sink





# One Wall w/ Island and Range - Appliances

FRIGIDAIRE  
PROFESSIONAL.



Frigidaire Professional 22.3  
Cu. Ft. French Door  
Counter-Depth Refrigerator

FRIGIDAIRE  
PROFESSIONAL.



Frigidaire Professional 1.8 Cu.  
Ft. 2-in-1 Over-The-Range  
Convection Microwave w/ 4  
Speed Hoodfan

FRIGIDAIRE  
PROFESSIONAL.



Frigidaire Professional 30"  
Electric or Gas Front Control  
Freestanding (choose either)



FRIGIDAIRE  
PROFESSIONAL.



Frigidaire Professional 24"  
Built-In Dishwasher with  
EvenDry™ System



# Kitchen Option 2 - One Wall w/ Island and Wall Oven

One Wall Kitchen with 36" Fridge, 30" Wall Oven, Cooktop and Microwave with Island and 32" Blanco Quattrus 15U Radius Sink





# One Wall w/ Island and Wall Oven - Appliances

FRIGIDAIRE  
PROFESSIONAL



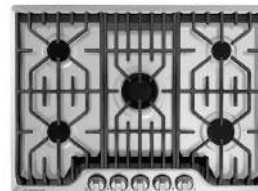
Frigidaire Professional 22.3  
Cu. Ft. French Door  
Counter-Depth Refrigerator

FRIGIDAIRE  
PROFESSIONAL



Frigidaire Professional 30"  
Built In Convection Microwave  
w/ Drop Down Door

FRIGIDAIRE  
PROFESSIONAL



Frigidaire Professional 30"  
Single Electric Wall Oven with  
30" Electric Cooktop or Gas  
Cooktop with Griddle (upgrade  
to 30" induction)

FRIGIDAIRE  
PROFESSIONAL



Frigidaire Professional 24"  
Built-In Dishwasher with  
EvenDry™ System

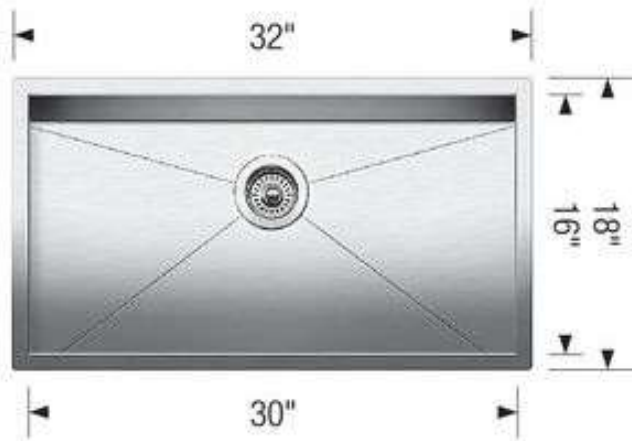
 **BOSCH**



Bosch 500 Series 30" Pull-out  
Stainless Steel Hoodfan

# Kitchen Island Option 1 - 3'x7'

**BLANCO**



32" Quatrus 15 U Super Single

**AQUABRASS**



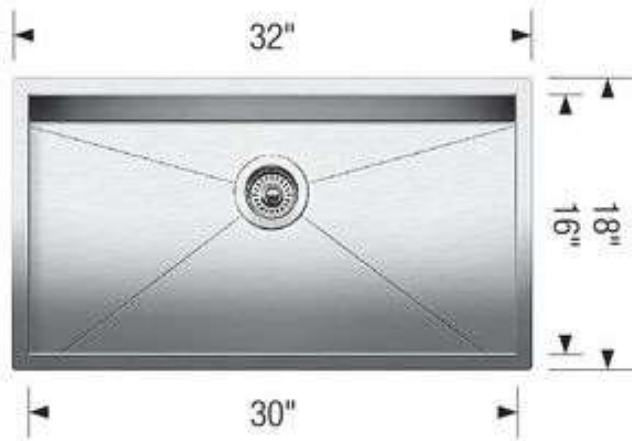
Aquabrax 3445N Studio  
Pull Down Dual Stream  
Faucet





# Kitchen Island Option 2 - 4'x7'

**BLANCO**



32" Quatrus 15 U Super Single

**AQUABRASS**



Aquabrax 3445N Studio  
Pull Down Dual Stream  
Faucet

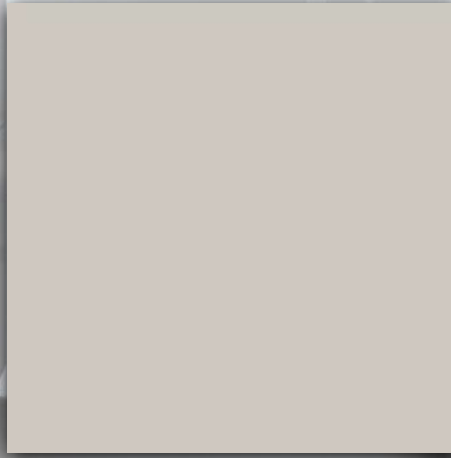


# High Pressure Laminates - Solid Cabinet Fronts

## Kitchen, Bath and Millwork Finish Options



Dark Grey

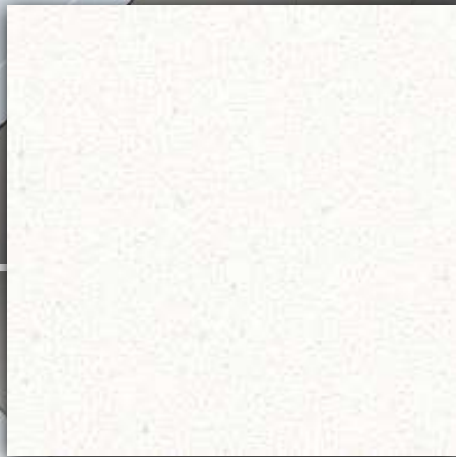


Pearl Grey



White

## Quartz Countertops and Backsplash Options



Blizzard



Ginger



Cement



# High Pressure Laminates - Wood Grain Cabinet Fronts

## Kitchen, Bath and Millwork Finish Options



Casting at First Light



Sunset Cruise



After Hours

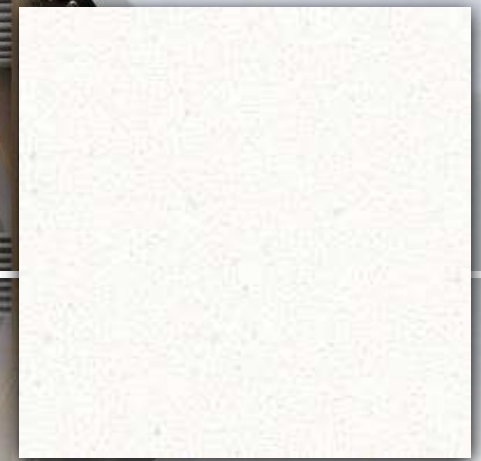
## Quartz Countertops and Backsplash Options



Cement

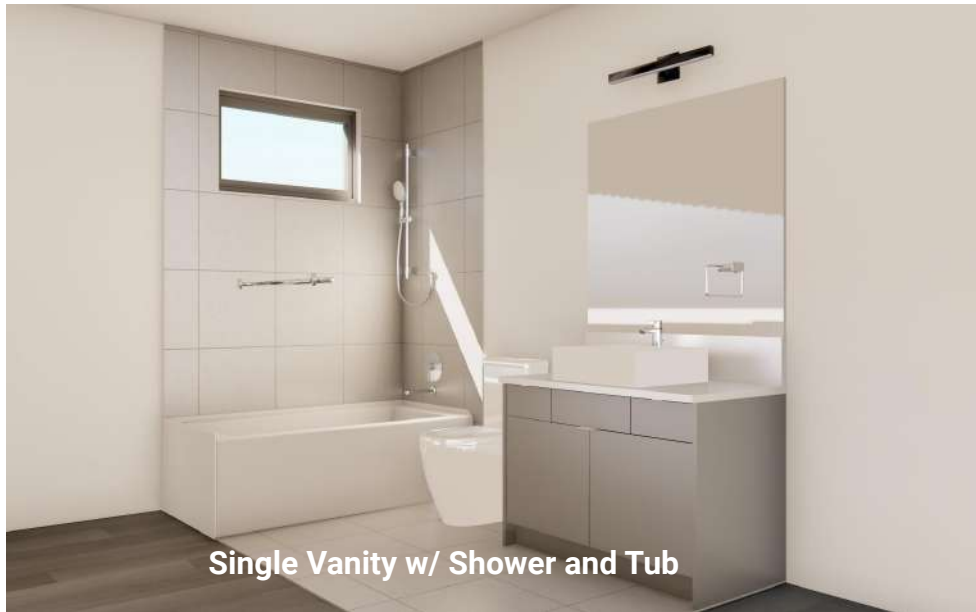


Shitake

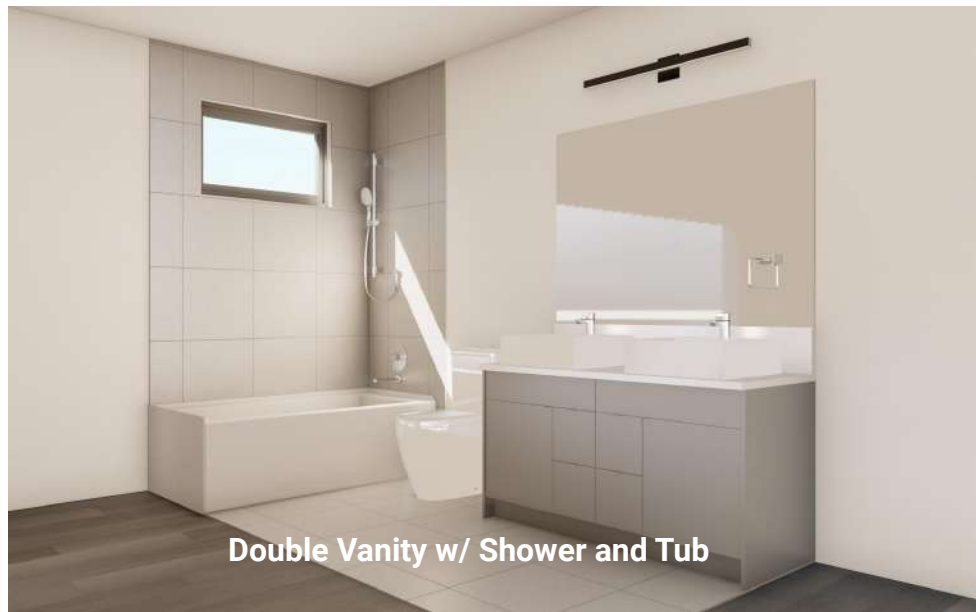


Blizzard

## 1 - Base Options



## 2 - Upgrade Options





## Wash Basin and Toilet



**Aquabrace Lugano 19"x19"  
Square Sink Basin**



**Aquabrace Volare Single Hole Sink  
Tap**



**Caroma Somerton Dual Flush**

## Bath Accessories - Aquabrace Serie 4700



**Robe Hook**



**Towel Ring**



**Paper Holder**



**24" Towel Bar**

## Shower Configuration



**Aquabrax Aquagrande Shower Set**



**Aquabrax Round Trimset**



**Maax Bosca Shower Floor Insert**

## Tub Configuration



**Aquabrax Aquagrande  
Shower Set**



**Aquabrax Round  
Trimset**



**Aquabrax  
Volare Wall  
Mounted Tub  
Spout**



**Kohler Underscore 60"  
Acrylic Tub**



## Base Tile - 12x24 Tierra Sol Abitare Remake, Non-Rectified



**Taupe**



**Grey**



**White**

## Upgrade Tile - 24x24 Tierra Sol Abitare Remake, Non-Rectified



**Taupe**



**Grey**



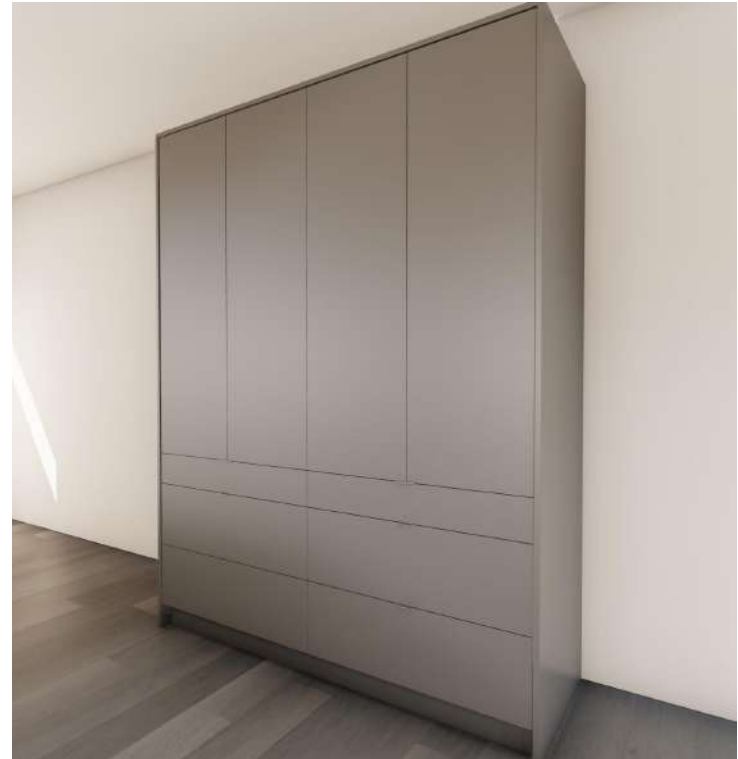
**White**

Option 1



Closet With Shelf and Rod & 7' Tall Doors

Option 2



8' Tall Built In Wardrobe



# Wood Burning Stoves

Stuv 30 Freestanding Wood Burning Fireplace



Enerzone Destination 2.3 w/ Blower



# Gas Fireplaces



Regency San Francisco 40  
Natural Gas Gas or Propane Fireplace

Majestic Jade Gas Fireplace





INCLUDED SPECIFICATIONS		
Framing and Subfloors		
Building Structure		LVL Rim Joists with Open Web Floor Joists and Roof Trusses per Engineering
Framing		2X6 standard spruce 16' spacing - exterior, 2x4 standard spruce 16" spacing - interior
Subfloor		3/4" tongue and groove plywood glued and screwed+3/8" Good One Sided Ply
Tile Areas		Schluter Ditra Membrane
Roof Protection		EPDM or TPO
Windows and Doors		
Windows		PVC Low E Dual Pane Windows
Exterior Entry Doors		Fibreglass or Aluminum Exterior Doors with Glass inserts and Multi Point Lock per plan
Sliding Doors		PVC Low E Dual Pane Lift and Slide
Garage to House (if any)		Fiberglass fire-rated insulated door with self closing hinges
Plumbing		
Hot Water		On Demand Boiler per Spec or Electric Hot Water
Tap Shut Offs		All taps except tubs and showers
Interior Water Lines		Pex to Code
Exterior Hose Bibs		Two - locations as per plan
Drain & vent pipes		Per Plan to Code
Gas Lines		To furnace, boiler, fireplace, BBQ, and range
Mechanical		
Heating		On Demand Boiler Per Plan
Air Handler		Ductless Split System for Heating and Cooling
Air Exchange		Ductless Split System for Heating and Cooling
Bath Fans		Ductless Split System for Heating and Cooling
Dryer Vent		4" with hood vent kit to exterior
Registers		PVC heat registers and wood or metal cold air return grills
Insulation		
Exterior Walls		In Stud Insulation to R22
Ceiling		Exterior Rigid Foam to R30 or Per Code Zone
Electrical		
General Wiring		Per Electrical Code
Thermostat		Nest Remote Electronic Programmable
Lighting		LED Per Plan
Cabinets and Millwork		
Kitchen Millwork		Per Drawing
Bath Millwork		Per Drawing
Interior Wall Covering		
Ceiling		½" Ceiling Density Drywall
Walls and Elsewhere		½" Drywall
Tub, Shower and Tile		½" Water Resistant Aqua Board
Corners		Square Throughout

# Specifications

Interior Finishes		
Interior doors	8' x 1 - ¾" Flat slab solid core painted	
Knobs, locks & hinges	Emtek or similar	
Doorstops	Wall mounted or hinge mounted where required with chrome to match door hardware	
Shelving	Painted MDF or wire per plan	
Baseboards	3.5" square edge	
Door Casings	2.5" square edge	
Window Casings	Cased Returns	
Paint		
Walls	Premium high-hide eggshell latex paint - white with 1 coat primer - white, 2 coats finish	
Interior door & woodwork	Painted with a premium high hide semi-gloss	
Flooring		
Bathroom	Tile Per Selections	
Rest of House	Hardwood Per Selections	
Kitchen Fixtures		
Sink	Aquabraxx Lugano Square Sink Basin	
Faucet	Aquabraxx Volare 61014-PC Single Hole Sink Tap	
Bathtub/Shower Combo	Maax Bosca 30x60 Drop In Tub	
Bathtub Faucets	Aquabraxx Volare Wall Mounted Tub Spout with Round Trimset	
Shower Faucets	Aquabraxx Aquagrande Shower Set	
Toilets	Caroma Somerton Dual Flush	
Toilet Carrier	10MM glass	
Shower Doors	3cm Quartz per selections	
Countertops	Elements modern slab per selections - kitchen and baths only	
Cabinets	Quartz to match counter	
Backsplash	Full Tile per plan	
Ensuite shower	Aquabraxx Serie 4700 Accessories 24" towel bar, hand towel ring and robe hook	
Bath Accessories	Aquabraxx Lugano Square Sink Basin	
Appliances		
Refrigerator	Frigidaire Professional	
Oven/Range	Frigidaire Professional	
Dishwasher	Frigidaire Professional	
Microwave	Frigidaire Professional	
Hood Fan	Frigidaire Professional	
Washing Machine	Whirlpool	
Dryer	Whirlpool	
Exterior Finish		
Exterior Siding - T&G, Metal and/or Panel	Per Plan	
Soffit	Per Plan	
Eavestrough & Downspout	Per Plan	



**Notes:**

- Units shown with King Size Bed for perspective.
- Each home is individually engineered prior to construction - specifications and pricing subject to change for snow loads and building code requirements for particular location.
- All homes include a one year factory warranty.
- Structures do not include furnishings or accessories other than those set out in the contract drawings.
- Actual usable floor space may vary from the stated floor area. E.& O.E.
- All pricing subject to final purchase agreement and terms set out therein.
- Pricing, materials, specifications, and floor plans are subject to change without notice.
- All designs, specifications and related materials are the property of Built Prefab Corporation: © Built Prefab Corporation.
- All artwork by someartygirl.com.
- Except as permitted by the copyright law applicable to you, you may not reproduce, utilize or communicate any of materials herein and including, without limitation, files downloadable from Built Prefab Corporation's website, without the permission of the copyright owner.

**Contact Built Prefab Corporation for further details. v07/06/2021**

## **Contact:**

info@builtprefab.com  
(250)300-3328

Web: <https://builtprefab.com>  
Instagram: @builtprefab

Kelowna, BC, Canada

**[www.builtprefab.com](https://builtprefab.com)**